



WATERPROOFING – B90

Ultra Luxury Waterproof Coating

Birla Opus Prime B90 Ultra Luxury Waterproof Coating is a specialized waterproofing formulation comprising of tough acrylic and PU hybrid polymers. The incorporation of a unique elastomeric structure, combined with acrylic fibres, enhances the film's strength and provides cooler exterior surfaces.

PRODUCT FEATURES



HYDROSTATIC PRESSURE

Protects against positive hydrostatic pressure of upto 12 Bar thus preventing infiltration of water into the film.



OUTSTANDING CRACK BRIDGING ABILITY

Highly elastomeric PU hybrid polymer provides crack-bridging of upto 3 mm.



SURFACE TEMPERATURE REDUCTION

Provides outstanding surface temperature reduction upto 12°C*.



ANTI-CARBONATION

Coating serves as a robust barrier against carbon dioxide thereby safeguarding the rebars from corrosion.



WARRANTY*

14 years warranty on vertical applications and 12 years warranty on horizontal applications.

PRODUCT DETAILS

AVAILABLE PACKS



COLOURS AVAILABLE

WHITE

SHELF LIFE



36 months
from the date
of manufacture

DIRECTIONS FOR USE

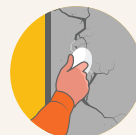
Recommended usage – To be applied on RCC or plaster using brush or roller. It can be used on building roofs, terraces, parapet, sunshades and exterior vertical walls. It can be also be applied on IPS, sound brick bat coba or cementitious waterproofing.

PRE PAINTING STEPS



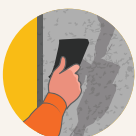
1. Plaster

It is essential to let new masonry surfaces fully cure. The suggested curing duration is 28 days, during which daily water curing is recommended for optimal results.



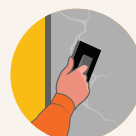
3. Crack filling

To fill cracks up to 5 mm, use Birla Opus crack fill solutions. Bigger cracks, damaged or hollow portions, etc. must be repaired with a polymer-modified mortar.



2. Cleaning

Ensure the surface is devoid of loose paint, dust, or grease. Eliminate any fungus, algae, or moss growth through wire brushing and water. In case of chalkiness on the underlying surface, perform water curing and subsequently apply a coat of Birla Opus AllDry Salt Seal prior to the topcoat application.



4. Covering of holes and dents

For addressing small dents and holes, utilize cement wall putty or a blend of white cement and fine sand in a 1:3 ratio.

Special Instructions for Exterior:

If exterior surfaces face persistent seepage or dampness, investigate and arrest the source of leakage or seepage, let the surface dry and then apply Birla Opus Prime waterproof coatings. Ensure we provide slope to horizontal surfaces and proper drain to avoid any stagnant water accumulation.

PAINTING APPLICATION PROCESS



1. Surface Preparation

Newly plastered surfaces must undergo complete curing. Ensure thorough filling of any spot with putty, crack filler, etc. and achieve a uniform surface across the entire wall.



2. Waterproof Coating Application

Dilute 1 litre of B90 Exterior Waterproof Coating with 300-350 ml of water and apply one coat. Allow it to dry for 4-6 hours. Apply another coat of undiluted B90 Exterior Waterproof Coating and dry for 4-6 hours.



3. Topcoat Application

Horizontal Surfaces: Apply additional coat of undiluted B90 Waterproof Coating in perpendicular direction. Allow it to dry for 4-6 hours.

Vertical Surfaces: Apply Texture (optional) and 2-3 coats of Birla Opus Prime Exterior topcoat with a gap of 4-6 hours after each coat.

POST PAINTING CARE

1

Conduct ponding test by filling water up to 5 cm height for 24 hours post 7 days air curing to ensure leak-free terrace.

2

For the best paint performance, regularly wash and clean surfaces to remove dust, stagnant materials, and any algae or fungus growth, preferably every six months.

3

Thoroughly clean horizontal surfaces to enhance durability.

4

Ensure there is no stagnant water at any point on any surface.

SAFETY ASPECTS

- Kindly refer to the MSDS, which gives detailed information on safety measures while handling the paint, which is available on request.
- Store the container with the lid tightly closed in an upright position, in a cool and dry place.
- Keep out of reach of children and away from eatables.
- May be harmful if swallowed. In case of ingestion, seek immediate medical attention.
- Wear eye protection during application. In case of contact with eyes or skin, rinse immediately with plenty of water and seek medical advice if irritation persists.
- No added Lead, Mercury or Chromium compounds.
- Left-over paint/drums should not be disposed in soil or drains or water courses.

PRECAUTIONS

- Ensure end to end application on parapet walls along with terrace and inside drainage pipes upto 6 inches.
- Glass fibre mesh (45 gsm) is recommended at areas with high movements or irregular substrate or to bridge cracks, joints and seams on the substrate. It must be sandwiched between 1st and 2nd coat and placed on surface when 1st coat is still wet.
- Do not apply when ambient temperature is less than 10°C or above 45°C.
- Do not apply on wet or visibly damp surfaces or when humidity > 80%.
- Do not apply if rain is expected within 48 hours from the day of application.
- For surfaces having heavy algal infestation, cleaning with bleaching solution is advised.
- Ensure that the terrace surface has adequate slope to avoid water accumulation.
- All corners, gaps, joints, repair areas and outlets shall be coated with extra coat.
- The surface should be in Surface Saturated Dry (SSD) before application of coating.
- The product is designed only for foot traffic and not vehicular or movement of machinery or equipment.

TECHNICAL INFORMATION

Appearance	Viscous liquid
Color	White
Adhesion to Dry concrete	> 1.5mpa
Tensile strength	1.8
Crack Bridging Ability	Up to 3 mm
Solar reflectance index*	More than 100 when tested as per ASTM E1980
% Elongation	Upto 250
Resistance to Positive hydrostatic pressure	Passes up to 12 bar

*Surface temperature reduction: Temperature recorded from 1 pm to 3 pm with the help of IR gun. Degree of surface temperature reduction will vary depending upon the surface & weather conditions.

Version No. B90-1002/03/2024

*T&C Apply. For more details visit www.birlaopusprime.com. Please refer to the product warranty document for further details. Kindly note that this datasheet supersedes all preceding versions.

