

INTERIORS – N10

Solvent Thinnable Wall Primer

Birla Opus Prime N10 Interior Solvent Thinnable Wall Primer is an alkyd based solvent primer designed to offer outstanding adhesion and durability.

PRODUCT FEATURES



EXCELLENT OPACITY

Excellent opacity of paint which ensures flawless finish with fewer coats.



STRONG ADHESION

Exceptional adhesion to protect against cracking and peeling of paints.



EASY BRUSHABILITY

Smooth and seamless roller strokes are achieved with ease.



EXCELLENT WHITENESS

Infusing your walls with a radiant and crisp quality paint, enhancing their overall appearance.

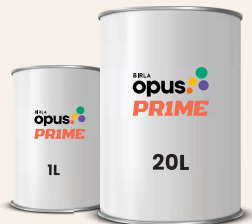


EXCELLENT FLOW & LEVELLING

Effortless application of paint for a uniform foundation giving a smooth topcoat finish.

PRODUCT DETAILS

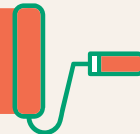
AVAILABLE PACKS



COVERAGE

Only on the correctly prepared surface using brush and roller:

180–200 sq.ft/L for 1 coat**



** Actual coverage may vary from the quoted coverage due to factors such as method and condition of application and surface roughness and porosity. One should ensure coverage is not higher than the one prescribed above for optimal performance.

COLOURS AVAILABLE



WHITE

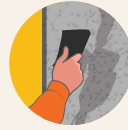
DIRECTION FOR USE

PRE PAINTING STEPS / SURFACE PREPARATION



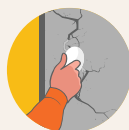
1. Plaster

New masonry surfaces must be allowed to cure completely for 28 days before painting. Ensure surface is free from any leakage, seepage, and efflorescence.



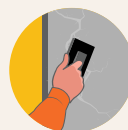
2. Cleaning

For repainting, remove loose paint, dust/dirt particles and laitance with sandpaper no. 180. Wipe clean. Algae or moss should be removed by wire brushing and water. In case of areas having excessive dampness use professional assistance to limit further dampness.



3. Filling of cracks

For filling cracks up to 5mm use Birla Opus crack fill solutions. For cracks above 5mm, it is recommended for cement: river sand (1:4 ratio) plastering. If the cracks are more, it is recommended to audit it with a structural engineer and get it repaired before painting.



4. Covering Holes and dents

In case of dents and holes use cement putty or a mix of white cement and fine sand in the ratio 1:3.

Special Instructions for Interior:

For Interior surfaces or substrates that are subjected to continuous seepage or dampness, please check the source of leakage or seepage and ensure the same is rectified before application.

PAINTING STEPS



1. Primer Application

Dilute 1 litre of Birla Opus Prime N10 Interiors Solvent Thinnable Wall Primer with 80-100ml of Mineral Turpentine Oil and apply one coat by brushing / rolling. Allow to dry for 6-8 hours.



2. Putty Application

Use Birla Opus One Acrylic putty to fill undulations of masonry surfaces. Ensure 4-6 hours of drying time. Apply second coat of putty if required. Sand the surface with emery paper no. 180, followed by no. 320



3. Primer Application

Dilute 1 litre of Birla Opus Prime N10 Interiors Solvent Thinnable Wall Primer with 80-100ml of Mineral Turpentine Oil and apply one coat by brushing / rolling. Allow to dry for 6-8 hours.



4. Topcoat Application

Apply suitable Birla Opus Prime Interior topcoat as per recommended procedure in the respective product data sheet.

For spray application, dilute 1 litre of Birla Opus Prime N10 Interiors Solvent Thinnable Wall Primer with 100-150ml of Mineral Turpentine Oil.

PRECAUTIONS

- Do not apply at relative humidity greater than 85%.
- Do not apply when ambient temperature is less than 10°C or above 40°C.
- For surfaces having heavy algal infestation, cleaning with bleaching solution is advised.
- Keep the material in closed condition when not in use.
- Ensure adequate ventilation under all application conditions.

SAFETY FEATURES

- Kindly refer to the MSDS, which gives detailed information on safety measures while handling the paint, which is available on request.
- Highly flammable product, do not store the product near electrical installations and flammable sources.
- Store the container with the lid tightly closed in an upright position, in a cool, dry place.
- Keep out of reach of children and away from eatables.
- May be harmful if swallowed. In case of ingestion, seek immediate medical attention.
- Wear eye protection during application. In case of contact with the eyes or skin, rinse immediately with plenty of water and seek medical advice if irritation persists.
- No added Lead, Mercury or Chromium compounds.
- Left-over paint/drums should not be disposed in soil or drains or water courses.

TECHNICAL DATA

Binder	Alkyd
Drying time	30 min surface dry*
Recoating time	6-8 hours*
Flash Point	Above 30 °C
Stability of thinned paint	To be used within 24 hours
Shelf Life	18 months

*May vary according to temperature & humidity